



Jessee Family Newsletter

Issue #25

Summer 2004

Vol. XIII No. 2

Dear Cousin,

This newsletter is just a bit shorter than usual. I hope you will forgive, as it is packed with good news. My time is also short, as this is a university catalog production summer, and we had to vacate some ten classrooms and dozens of offices in June. I had to find space for all that furniture, not to mention the people, and hundreds of classes! It was a wonder I had the time for the reunion, but I did make it and brought cousins! Unfortunately the photos inside are only mine.

The Jessee Historical Foundation has several significant developments to report (see JHF News inside), but there have been more than a few difficulties. Some of the board would welcome relief, and several JHF projects and activities need more help. We invite members to be JHF board members and officers, as we will elect both a new board and officers next June at the Annual Meeting. Please consider volunteering.

It appears one of our tasks is to have Jessee's Mill and Dam declared an official state historic site. Our president, Joe Jessee in Lebanon, needs your help to see our dream come true. There is some good news on all this inside and terrific news about the Jessee's Mill Road and Historic Sign; have faith and keep on plugging.

The newsletter is also shorter because there was less news about each of the fifteen children, and that news depends on you. While I have received fewer news items, the family database continues to grow with over 43,000 records. There is always so much data entry to do; just the daily requests for help fill most evenings. Still, I am excited and gratified every time I extend the descendants for the Jessee family and am always astounded as I see increasing evidence of the interrelatedness of all these SW Virginia families. We are all cousins.

We have an interesting newsletter thanks to so many of you who help support the effort through generous contributions of information, photographs, documentation, and money. My spirits are uplifted by your letters, email, and calls.

Jim Jessee

Featured This Edition

The 2004 and 5th National Jessee Family Reunion was held Saturday, June 19, 2004 at the Coomes Recreation Center in Abingdon, VA. I share inside photos and memories of the 2004 National Family Reunion from the Jim and Nelda Jessee perspective, only. I invite others to send along their best photos and memories for me to share in the next newsletter.

The picnic may have been down in numbers to two hundred and some, but the food was plentiful and delicious, and the hospitality, entertainment, and fun plentiful. The research day was well attended, and the Welcome Reception was much appreciated by us out-of-town cousins.

Under JHF projects, there is much good news and photos to see. County Road 645 has been renamed Jessee's Mill Road, and the State has approved the placement of a private historic highway marker. Efforts to preserve Jessee's Mill and create an historic park around it continue.

SW Virginia families includes contributions regarding the **Charles Bickley and Pruner, Meade, Alderson, and Gibson families.** These historic families have intermarried with the Jessees over 200 years, so we have much in common.

Other Jesse(e) Families and Family Origins includes tidbits of information regarding a German origin Jesse family. We have two significant contributions regarding the **Phillip and Rachel Jessee** descendants, too.

Find news on John and Frankey Lea Jessee and their fifteen children. See new information and photos, read heart-warming stories, and meet new cousins inside. Several have sent articles and photographs which I am happy to feature. See a five generation photo from **Dee Ann Burris** and other historic family photos that have been shared.

Correspondence and Missing Links is rich with news, inquiries, and information, as well as some genealogy humor we hope you will enjoy.

Jessee Resources on the World Wide Web has a few more clues for us computer geeks and the latest information regarding the development of the **Jessee Family Database.**

The 2005 National Jessee Family Reunion

Saturday, June 18, 2005
at the Harry L. Coomes Recreation Center,
300 Stanley Street, Abingdon, VA

The 2005 Jessee Family Research Day
Friday June 17, 2005
at the Russell County Library
203 NW Main Street, Lebanon, VA

Please put the 2005 Family Reunion
and Research Day on your calendar now

The 2005 Jessee Family Research Day will be held Friday, June 17, at the Russell County Public Library in Lebanon, VA. The activities begin at 9 a.m. and end about 4 p.m. The Jessee Historical Foundation will hold its annual membership meeting at the Russell Co. Library at 4 p.m., June 17, after the research day. The JHF will elect new officers at this meeting, so your attendance will be welcome.

The 2005 Jessee Family Reunion and Picnic will be held on Saturday, June 18, 10:30 a.m. to 5 p.m., at the Harry L. Coomes Recreation Center & Park, Abingdon, Virginia.

To get there: Take exit 19 from Interstate 81, go north on Route 11-Main Street toward Abingdon, approximately 0.7 mile. Bear right (north) at the second light onto Thompson Street, beside the shopping center. Go about 100 yards, then go right on Stanley Street. Coomes Recreation Center will be around the big curve, over the hill on the right.

For information about this historic area, lodging, golf courses, etc., please call the Abingdon Convention & Visitors Bureau at 1-800-435-3440; Phone: 276-676-2282 or Fax: 276-676-3076, E-mail: acvb@abingdon.com or Internet: www.abingdon.com/tourism.

Remember to bring a covered dish, enough to feed your family and at least four additional "cousins." You may bring a folding chair. Bring your musical instruments.

For picnic day information contact the JHF Picnic Committee: Toby Jessee, Chairman, 276-623-1105.

THE SILENT AUCTION NEEDS YOU

Plan to participate in the annual silent auction, held during the family reunion on Saturday, to help raise funds for the Jessee Historical Foundation. To make the auction a success, your contributions are needed. Use your imagination to think of items to be contributed. The items for the auctions can be brought to the reunion picnic to be held at the Harry L. Coomes Recreation Center & Park Grounds, Abingdon, VA. If you have any questions about what to contribute to the auction, please contact:

Mary H. Akers

E-mail: phoenix@naxs.com

Phone: 540-628-9239.

2004 Research Day and Reunion Highlights

Nelda and I had the great pleasure of attending the 2004 Reunion with my first cousin Richard Jessee, and with his son, Larry, and grandson, Peter Jessee. It was like having new eyes, as I had the pleasure of showing my fellow Butte Co., CA cousins, Russell Co., VA and the Jessee and Bickley sites, as well as the beauty of this country. We were made more than welcome at the Out-of-Towners Reception, Thursday night at the Quality Inn, the Research Day, Friday at the Russell Co. Library, and at the Picnic on Saturday. We give special thanks to Joy Malone, Mary Akers, Helen Reedy, Bill and Fay Jessee, and Doodle and Ernestine for their help, warmth, and hospitality. We felt so welcome, and we loved our time with you.

There are many to thank for making the reunion another success, very enjoyable for all. I will surely leave some out, to whom I apologize, but I know Joe Jessee, Toby Jessee, JC and Nellie Jessee, Vernon and Pauline Salyers, Mary Akers, Helen Reedy, Norma McHone, Tip Jessee, Karen Hall, and their helpers did all the organizing and heavy lifting for the rest of us. Thank you for your time and trouble.



The Jessees were made welcome at the Quality Inn with lobby decorations and Welcome Reception hosted by Joy Jessee Malone, Mary Akers, Vernon and Pauline Salyers, Nellie Jessee and other cousins. Nelda Jessee enjoys a relaxing moment.



Richard Jessee, with son Larry Jessee and grandson Peter Jessee enjoyed the hotel lobby and the complimentary breakfasts!

Highlights of the 2004 National Jessee Family Reunion



Toby Jessee, Chair of the Picnic Committee, lead the ceremonies, assisted by Mary Akers, who headed up the Silent Auction, the Jessee Cookbook, and Membership for the JHF, among duties.



Reverend Cecil Jessee, Robert Trigg Jessee, and Fay Jessee provided good old-fashioned country music.



Doodle Jessee, Clio Jessee McDavid, age 93, with her first cousin.



Reverend Cecil Jessee



Fay Jessee on dulcimer



Mary Evelyn Hanson Helton, a John Jessee, Jr. descendant, chats with J. C. Jessee, a Phillip and Gabriel Jessee descendant. Both have contributed much to Russell Co. genealogy research.



Together, Judy Jessee and her brother Robert (Jessee) Tucker, separated as children and reunited through their efforts to find their Jessee roots and lost sibling by searching the Jessee Web Page and coming to the reunion in different years. Rev. Cecil Jessee and his daughter Caroline figured out they might be looking for each other, put them in contact, and we have a very happy ending.



Mary Akers made the quilt that was signed by all those attending the reunion and was sold at the Silent Auction. Quilting and other handwork were very much in evidence at the Silent Auction. Helen Reedy provided several members of the board her handiwork, home made "quillows."



Family Artist Irene Jessee Perry, a Philip and Gabriel Jessee descendant enjoyed the reunion with her family.



Cricket Jessee with his family.



Bothers and sister, Lawrence, Dorothy, Lowell, and Doodle Jessee, with me, Jim Jessee, at the Jessee Genealogy Research Station.



Karen Jessee, a close cousin of Jim's, surprised us at the reunion with a visit. We have not seen each other in years.



Some of the John Jessee Jr. descendants during a photo op.



More John Jr. descendants.



Bill Jessee representing the Archer Jessee descendants, all alone! Come on Archer descendants, Bill needs you.

Jessee Historical Foundation

Founded March 8, 2001

The JHF board, officers, and volunteers:

Joseph H. "Joe" Jessee, Jr., President
Laura Jessee Thomas, Vice-President
Norma McHone, Treasurer
Helen Reedy, Recording Secretary
Mary Akers, Membership Secretary
Carolyn Sue Jessee, Assistant Membership Secretary
Henry "Hank" Davis, Legal Advisor
Taulbee F. "Toby" Jessee, JHF Picnic Chair
W.D. "Tip" Jessee, JHF Newsletter Chair
James W. "Jim" Jessee, Genealogist/Web Page Editor
Members At Large: Peggy Jessee Adams, Karen Hall, Carl B. Jessee, James C. "J.C." Jessee, John D. Jessee, Joseph Harold "Doodle" Jessee, Sr., Robert Trigg Jessee, Rev. Vernon Cecil Jessee, Irene Jessee Perry, Helen R. Reedy, Pauline Salyers, Vernon Salyers, Janice Sue Jessee Tiller.

Go to www.jessee.org for more information, minutes of Foundation Board meetings, photos of Foundation activities, and Foundation news and events. *Please Join Us.*

Membership Information

The Jessee Historical Foundation extends an invitation and warm welcome to new members and welcomes your annual membership renewal.

Annual membership will now run from reunion to reunion each year. Dues to be collected at the annual reunion in June for the following year. JHF Membership dues for 2004/2005 are due June 2004.

There are three categories of membership. Anyone age 81 or older may request free lifetime membership. The annual fee is \$10 per person. Ask about lifetime membership, too.

1. Regular Member: If you have a Jessee, Jesse, Jessey or Jessie surname, or are an adult Jessee descendant you are eligible to be a regular member with full voting privileges. Please provide information to verify your Jesse(e) lineage.

2. Associate Member: Spouses, related family, or friends of a regular member, who are non-voting.

3. Junior Member: Family members under age 18, who are non-voting.

Send an application. Get one at www.jessee.org. or provide the following information: Name, Street or PO box address, City, State, ZIP, phone, email address, and your Jessee pedigree. Please send your application and check, payable to Jessee Historical Foundation, Inc., for \$10 per person, to Mary H. Akers, the membership secretary, at the following address.

Jessee Historical Foundation Inc.
C/O Mary H. Akers, Membership Secretary
19346 Oakwood Dr.
Abingdon VA 24211
540-628-9239
phoenix@naxs.com

Foundation News

JOE JESSEE [joejessee@yahoo.com] wrote, 5/3/2004, with much good news about the Andrew Jessee Home and several of the JHF projects.

The Andrew Jackson Jessee house, which is located across from the Jessee Mill, was recently put up for auction. The final bid for the property was \$73,000; The final bidder was from Davenport.

I should also report that State Route 645, between Fincastle Road (U.S. Route 71) and Cleveland Road (U. S. Route 63), is now named "Jessees Mill Road."

Work is continuing with the Virginia Department of Historic Resources ("DHR") on Jessee's Mill being added to the Virginia and United States Historical Landmark Registries. All indications are that this will eventually come to pass; it was recommended three years ago by the DHR.

The Jessee Historical Foundation ("JHF") has an immediate opportunity to erect a private historical marker for Jessee's Mill and associated history! The proposed marker and text will soon be reviewed and finalized for approval and payment by the JHF Board of Directors. Any historical or grammatical corrections are most certainly welcome as those words will be ironclad, so to speak.

Sincerely,
Joseph Jessee
President
Jessee Historical Foundation, Inc.
May 3, 2004

At the Board of Directors meeting, June 18, 2004, the JHF approved the sign, contingent upon final State Department of Highways approval of the submitted sign and location for placement.

Joe Jessee, President of the Jessee Historical Foundation, has arranged for the placement of an historical marker highway sign at the junction of Highway 71 and Route 645, now renamed "Jessees Mill Road." Joe has already had this sign designed by a professional sign shop and produced. **This development and the name change of Route 645 to Jessee's Mill Road, are major accomplishments.**

Virginia State Approval for the Private Historical Highway Marker was received, June 17, 2004. See the letter of approval below. Last word is that Joe hopes the sign can be installed this summer.



Jim Jessee with Russell County Administrator Jim Gillespie at the location where the Jesse's Mill sign will be erected just behind this intersection sign on Highway 71 and Jesse's Mill Road.



Here is the Jesse's Mill Road sign at the other end of former County Road 645 at Cleveland Road.

Department of Historic Resources
 W. Tayloe Murthy, Jr.
 2801 Kensington Avenue,
 Richmond, Virginia 2W21
 Kathleen S. Kilpatrick

June 17, 2004

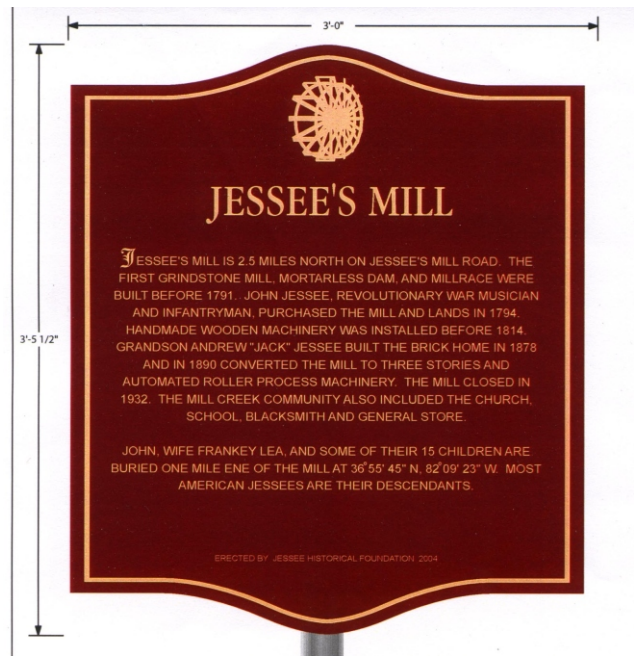
Mr. Joseph H. Jessee, Jr.
 The Jessee Historical Foundation, Inc.
 PO Box 1617 Lebanon. VA 24266
 Dear Mr. Jessee:

The Board of Historic Resources at its meeting on June 16, 2004, approved the Jessee Historical Foundation's proposed marker design and erection of the one sign that will discuss Jessee's Mill per the Code of Virginia regarding historical signage. The Jessee Historical Foundation can proceed in having this sign made and erected. Please note that the Jessee Historical Foundation is responsible for ensuring the accuracy of the material that will appear on this sign.

Scot Arnold
 Historical Highway Marker Program Manager
 804-367-2323. exL 122

If you have any questions, please let me know.
 CC:

John Kern, Roanoke Regional Office Director
 Department of Historic Resources
 David Simins,
 Bristol Virginia Department of Transportation District



Planned Jessee's Mill Historical Highway Marker

JESSEE'S MILL

Jessee's Mill is 2.5 miles north on Jessee's Mill Road along Mill Creek. The first grindstone mill, mortarless dam, and millrace were built before 1791. John Jessee, Revolutionary War musician and infantryman, purchased the mill and lands in 1794. Handmade wooden machinery was installed before 1814. Grandson Andrew 'Jack' Jessee built the brick home in 1878 and in 1890 converted the mill to three stories and automated roller process machinery. The mill closed in 1932. The community also included the church, school, blacksmith and general store.

John, wife Frankey Lea, and some of their 15 children lie buried one mile ENE of the Mill at 36° 55' 04" N, 82° 09' 23" W. * Most American Jessees descend from them.

Jessee Historical Foundation 2004

JOE JESSEE is now chairing the committee working on requesting that Jessee's Mill be declared a Virginia State Historic site. See report below.

MARY AKERS [phoenix@naxs.com], with Nellie Jessee, Pauline P. Salyer, Janice Tiller, Karen Hall, and W.D. "Tip" Jessee, along with dozens of cousins who contributed recipes, have produced a Jessee Family Cookbook, titled *Recipes of Jessee Descendants*. It is dedicated to the memory of Mike Malone and includes a beautiful memorial statement. The following is taken from the JHF Newsletter, spring 2004.

THE JESSEE FAMILY COOKBOOK

We already know that there are a lot of good cooks in the Jessee Family and now, thanks to the efforts of Mary Akers, everyone is going to have the opportunity to learn their secrets. Mary requested and received an assortment of recipes from Foundation members scattered across the United States. Thanks to all those contributors, we have been able to put together the first

Recipes of Jessee Descendants. It has a total of 150 pages with 250 recipes.

The Cookbook will sell for \$10 and will be available at the Family Research Day and Picnic (and other future Jessee events). We could only accommodate a certain number of recipes, so for all those whose recipes didn't make it into the book, don't despair, we could always have a second book sometime in the future if there is enough interest.

With Joy's permission, the committee chose to dedicate the cookbook to her husband, Mike Malone, who did so much for the JHF and whose memory will be with us always. Although Mike wasn't a Jessee, he considered us his family and enjoyed the time he spent with us.

To order a book by mail, send \$12 (includes shipping) to Mary Akers. Send your check (made out to JHF) along with your name and mailing address to:

Mary H. Akers
19346 Oakwood Dr.
Abingdon VA 24211-6830

JHF Projects and Activities

The following projects, activities, and undertakings have been discussed, and several have been acted upon by the JHF. Whether you are a board member or not, these projects and activities will need volunteers and other help. Please consider what you can do to help.

1. Providing public access to, fenced protection and restoration of the John and Frankey Lea Jessee Cemetery and other Jessee family cemeteries is one of the main reasons for founding the JHF. This cemetery is owned by Jimmy Herndon, who now lives on the property and has renovated the home there.

Mr. Herndon is not now willing to cooperate with the Jessee family on these goals, and suggests that if we want access, we purchase his farm. I would love to do that, and hope we keep that in mind. For now, I believe we need to look at more options on how to protect the cemetery, how to hold the landowner harmless for any liability, and to help him with costs for preserving it.

2. Preservation of Jessee's Mill, Dam, and School. This will need much study and documentation, requests for appropriate historical designation, and major fund-raising and grant development. Please see the articles that follow.

3. The establishment of Virginia State Highway or Russell County Historical Markers for Jessee's Mill and other appropriate Jessee Family sites. See Joe's news above. There is significant progress on this project, although this may set a precedent for developing further private historical signs for family landmarks..

4. Creating a Jessee Family Cook Book. See the discussion above and the effort of Mary Akers. Volume 1 has been published, and there appears to be interest in another.

5. Planning for the next and future National Jessee Family Reunions, Research Days, and Annual Meetings. Local volunteers and several JHF board members are doing more than their fair share in organizing and managing these activities. Active committees are doing excellent work, but they always need help and volunteers to tend to the many details of providing a Welcome Reception, Research Day, Annual Meeting and Reunion Picnic. Please help.

6. Clean-up and preservation of other Jessee cemeteries and historical sites.

2004 JHF BOARD MEETINGS

Saturday, March 6, 2004

at Quality Inn, Abingdon, VA.

Friday, June 18, 2004 after the Research Day
at the Russell Co. Public Library

Saturday, October 2, 2004

at Quality Inn, Abingdon, VA.

Jessee's Mill Historical Site and Highway Marker Projects

The Jessee Historical Foundation intends to undertake the establishment of one or two state highway historical markers pertinent to the history of the Jessee Family in Russell Co., VA, with **Jessee's Mill as the first priority.** Please see the JHF News article above for the good news on this project! Ahead is consideration of a much more detailed sign or an historical information display at Jessee's Mill, and other signs for family landmarks we may wish to consider.

John and Frankey Lea Jessee Cemetery Protection Project

Protection and restoration of the John and Frankey Lea Jessee Cemetery, if not public access, is one of the main Jessee Historical Foundation goals. This cemetery is owned by Jimmy Herndon, who now lives on the property and has renovated the home there.

Mr. Herndon is not willing to cooperate with the Jessee family at this time, has expressed various complaints, asks for privacy, and suggests that if we want access to the cemetery, we purchase his farm.

I believe we will need more investigation of our options and how to seek the cooperation of Mr. Herndon in at least providing demarcation and protection of this cemetery from further deterioration or damage from agricultural or other activities. I believe we need to work with Mr. Herndon to find a way to hold him harmless for any liability for those

who may visit this cemetery with or without his permission.

In the meantime, I, and the JHF, ask that we not aggravate Mr. Herndon with unauthorized visits to his farm, home, and this cemetery.

[Please see prior issues of the Newsletter for much more detail, discussion and recommendations on this matter.]

We still need to get John Jessee recognized as a Revolutionary War Soldier and the cemetery where he and Frankey are buried acknowledged as a Revolutionary War grave site. We know that it is also a Civil War soldier grave site, and may need this recognition as well. New volunteers are needed to pick up this baton.

DEBORAH ROOKARD (d_rookard@adelphia.net) sent, 1/11/2004, this information in regard to **preserving Virginia pioneer cemeteries**. She provided the following article at www.timesdispatch.com.

If this is working in Hanover County, maybe it can be enacted in Russell, too. There is always hope.

The Goal: Protect Private Burial Sites--Planning Department In Hanover Has Plan To Register Cemeteries

By Lea Setegn, Times-Dispatch Staff Writer Jan 7, 2004

Private cemeteries and grave sites are numerous in Hanover County, and Kevin Nelson wants to see them added to county maps to protect them from development.

Nelson, the Geographic Information Systems manager in the county's planning department, recently created a process by which people can register private cemeteries with the county. The information would be consulted when development plans are submitted to the county.

"Over the last few years, we've probably had 200 people bring us information [on private cemeteries]," Nelson said. "We were kind of struggling with how to process all of this. That's why we came up with a formal program."

Awareness of private cemeteries in Hanover blossomed in 2002, when developer PMG-ONE dug up 215 graves while working in the Pebble Creek subdivision.

Grave sites have been an issue for other subdivisions as well, Nelson said, but those developers did not get a court order to remove the graves the way PMG-ONE did.

"What happened at Pebble Creek was just wrong," said Sheri Millikin, a Hanover resident who has relatives buried in several private cemeteries in the county.

Millikin is working with Nelson to register the cemetery where her great-grandparents are buried in Mechanicsville. Their graves, along with those of other family members, are located on property belonging to non-family members.

"Any step toward helping preserve and protect [the cemeteries] is a step in the right direction," Millikin said of the county's new program. "As long as we don't go back to seeing anything take place like what happened at Pebble Creek."

Having a private cemetery registered with the county means that the information will be included during the planning department's review of a proposed development.

A developer could still remove the cemetery, but either a permit from the state Department of Historic Resources or a court

order would be needed to do so. Both processes require that the public be notified before the cemetery is removed and that an effort be made to notify known descendants.

There are two ways to register a private cemetery with the county. In either case, cemeteries can be registered by people who do not own the property.

To have the cemetery fully recognized by the county, it must be noted on a surveyed plat recorded in the Clerk of the Circuit Court's office. The cost of obtaining the plat would be borne by the person submitting it.

The planning department should receive a copy of the plat, along with a completed copy of the new "Hanover County Cemetery/Grave Site Location Form."

People unable to obtain a surveyed plat can give the planning department documentation of the cemetery's existence and location. The information should include the property owner's name, the tax parcel number, a sketch plan noting the cemetery's location, names of individuals buried on the site, dates of the graves, and any photos or historic documents regarding the cemetery.

The planning department would then maintain that record and consult it if development plans are submitted for the property.

Using this method, however, does not fully ensure that the county can protect the cemetery. The only way to guarantee that protection is to submit a surveyed plat.

Acquisition of Jessee's Mill and Andrew Jackson Jessee Home Remains a Dream

As some of you may know, Kathryn Greever, John Funk and I, among many others, believe that the JHF or other significant benefactor or foundation should look into acquiring Jessee's Mill along with the dam above it and the Jessee School for a **Jessee's Mill restoration project, as the anchor for a Mill Creek Historic Park**. See the following articles. We had hoped that we could acquire enough land around the mill, dam, school, the Andrew Jackson Jessee home and the miller's home to preserve a sense of the original Mill Creek Community environs. Sherman Wallace indicates he is very willing to work with the Jessee family regarding these ideas. This is a wonderful opportunity to preserve these significant historical landmarks and perhaps create a small historical park around it for Russell Co. and all its sons and daughters across America.

I have learned that the Jessee Historical Foundation, while a non-profit corporation, limits its membership to Jessee descendants only, and thus would not qualify as a public charitable non-profit organization for receipt of tax-deductible donations or other grants or contracts. Thus the JHF organization cannot undertake this project directly, but can help develop the ideas and lend support to a benefactor or an appropriate public non-profit charitable group, corporation, or foundation which could undertake this.

I ask members in or near Russell County to consider how this might happen. Would the Russell County government, Chamber of Commerce, Genealogy or Historical Society, or other appropriate

group be willing to look into creating a Russell County or Mill Creek Historic Park with a renovated Jessee's Mill as its centerpiece? If not, is there sufficient interest to create a separate non-profit tax exempt organization or foundation for this purpose?

JOE JESSEE (joejessee@yahoo.com) wrote, 4/17/2004, with news regarding **Andrew Jackson Jessee House Auction** (later updated in this newsletter). This is the Andrew Jackson Jessee Home which was apparently to be sold at auction April 24, 2004 at 10:00 am in Russell County, VA. It is the historic brick home across the road from Jessee's Mill, the Mill Owner's Home, which should be part of the Mill Creek Historic District some day. The universe just keeps handing us opportunities, pray that someone can come forward for us, or that someone acquires it that will be able to maintain its historic character.

CHARLIE THOMPSON [thomps@daktel.com] followed up, 4/26/2004, with the actual ad.

The attached ad is in the Wednesday 21, 2004 issue of The Lebanon News. It would be so nice if the family could purchase this piece of Jessee Family History.

Jessee's Mill Restoration


The restoration of Jessee's Mill is a dream shared by many of us who read this newsletter or e-mail me via the Jessee List. I am willing to do what I can to encourage such an idea, and offer this newsletter and the Jessee Genealogy Service Website as one vehicle for sharing information about how to accomplish this. While the JHF supports this project and has budgeted money to support this effort, it is beyond the charter of the JHF to accomplish alone. As always, we need volunteers and leadership in or near Russell County. Your help is welcome.

The water powered Jessee's Mill is located 2.5 miles north of Route 71 on route 645, Jessees Mill Road. It is believed the dam and first mill was built before 1791 by Aaron Van Hook on Carr's, now Mill Creek. It is mentioned in a survey of this land dated, 13 June 1791. It was sold in 1792 to William Gilmore.

The mortar-free stone dam, based on a Peruzzi design (Italy), strengthens with stronger water current. Handmade wooden gears for the mill wheel, believed to be an Oliver Evans design, were installed about 1814. In 1890, the mill was enlarged to a three story building with automated roller process machinery from Salem Machine Works (Virginia). Mill operations ended in 1932.

AUCTION

HOUSE & LOT • PERSONAL PROPERTY • ANTIQUES
Saturday, April 24, 2004 • 10 AM
 2546 Jessee Mill Road
 Mill Creek Area of Russell County, VA
Owners have moved and are offering this property at Public Auction



DESCRIPTION: Circa 1878 Historic Brick Victorian House, built by Andrew Jackson Jessee, Civil War Veteran, across from the historic Jessee's Mill and beautiful Mill Creek. 3 bedrooms, 2 baths, kitchen, living room, den, garage with school bell, smoke house, 2 acres. Hardwood floors throughout, stained glass doors, fireplace in every room, multiple built-in cabinets, extensive ornamental woodwork in oak, chestnut, walnut, 11 ft. ceilings, large rooms, tall arched windows, several different styles of chandeliers. Recently updated plumbing, wiring & furnace, septic system, gas furnace with steam radiators, gas logs in den fireplace. Kitchen has built-in pie safe with unusual punched tins, lg. chestnut mantle, 1920's operational cast iron / porcelain stove. Dining room has 2 large built-in glass bookcases and white oak mantle. All of the doors in the house are original, with raised panels and porcelain knobs, no two doors are alike. Large bathroom upstairs has 2 pedestal sinks, and porcelain tub, separate shower. Bathroom downstairs has claw foot tub & vintage sink, washer & dryer hookup. Exterior has ornate cornices all around, decorative woodwork on front porch. Mature plantings, many perennial flowers & several flower gardens.

Please note under title to the purchaser of a single family residence has a maximum of 10 days to conduct a risk assessment or inspection of a structure built before 1970 for the presence of lead based paint and/or lead based paint hazards. The date of the appearance of the first advertisement for the property begins the 10 day time period. Seller and Auction Company assume the purchaser has inspected structures situated on the property prior to bidding and that property is suitable for purchasers use. Purchasers should rely strictly upon their own judgment in bidding.

ANTIQUES & PERSONAL PROPERTY: 1996 Ford Escort; McCoy Pottery-including flower form vases, wall pockets, planters; Blue Ridge Pottery-large collection including many rare 12 inch plates; Depression Glass-assorted; 50's Glass; Prints-Currier & Ives, others; many original paintings; many oil lamps unusual styles Aladdin, wall mount types; folk art 50+ collection of advertising-oyster cans, local calendars, soda bottles, milk bottles, medicine bottles; 2 large wool vintage hooked rugs; Vintage textiles; Beveled mirrors; many types of candlesticks-pewter, iron, glass, brass; roll of heavy Victorian wire fencing; lots of other misc., pottery and glassware; 8 ft. oak foot dining room table; 7 ft. oak church pew; Various oak chairs; Crewelwork Chippendale love seat; Queen Anne armchairs; Handmade solid walnut partners desk; Solid walnut pegged hall tree; Large handmade walnut gentleman's dresser; Glass front oak corner cabinet; Walnut chest of drawers; Handmade walnut & chestnut cupboard from Saltville, made by Andrew Jackson Snodgrass; Snodgrass-Civil War Veteran; Full size cast iron bed; various small tables; Oak teachers desk; Primitive kitchen cabinet with green glass knobs; Large blanket chest; Meal chest; Potato bin, grain painted, 1800's; Metal porch furniture. Other antiques and listed items.

INSPECTION: Real Estate Sunday, April 18, 2:00 - 3:30 p.m. or shown by appointment
 Personal Property one hour before auction Saturday, April 24

TERMS:
REAL ESTATE 10% down day of auction balance 30 day at closing
PERSONAL PROPERTY Cash or good Check day of auction

FOR MORE PICTURES CHECK OUR WEB SITE WWW.COUNTSAUCTION.COM

DIRECTIONS: From Lebanon, Va. business 19, turn onto Hwy 71, go 3.6 miles, turn right on 645, go 2.5 miles to auction.
 From St. Paul (Wise County) turn left off Hwy 58 at Dogtown onto Hwy 71, go 5.4 miles, turn left on 645, go 2.5 miles to auction.
 From I-81 Exit 14, Abingdon, Va. go 4/10 mile to Hwy 11, right on Hwy 11 for 8/10 mile, left on Hwy 19 north 12.8 miles to just past Hansonville, left on 645, go 4 miles, turn right on Hwy 71, go 8/10 mile, turn left on 645, go 2 1/2 miles to auction.

Announcements made day of auction take precedence over all printed materials.


NAA
 Auctioneer
DAVID COUNTS
 Va. Auctioneer #0326
 Abingdon, Virginia
 (276) 628-8123
 1-800-797-1579

For further information contact

COUNTS AUCTION GROUP

AUCTIONEERS

Abingdon • Lynchburg • Marion
 www.countsauction.com BILL BRYANT - Lynchburg, Virginia

Member

DANNY COUNTS
 DWIGHT COUNTS
 Va. Auctioneer #2276
 Marion, Virginia
 (276) 783-3444
 Fax (276) 628-8633



Richard Jessee, of Chico, CA at Jessee's Mill, June 17, 2004

In 1794 William Gilmore sold the land and mill to John Jessee, a Revolutionary War musician and soldier. The mill was improved by John Jessee and later owned by his son Archer Jessee. John and his wife Frankey Lea Jessee raised a family of fifteen children and are buried on this land at West longitude 82 09'23", North latitude 36 55' 04". The current mill was constructed by Andrew Jackson Jessee, his grandson, whose 1878 brick home is located just across Mill Creek.

Mill Creek once was a thriving community with a school, church, general store, and blacksmith, centered on the Jessee mill and businesses.

There has been significant progress made towards having Jessee's Mill declared an historic landmark. During spring 2003, Joe Jessee and Sherman Wallace submitted a preliminary application to the VA Dept. of Historical Resources for State historical status. On June 16, 2003, Joe and Sherman toured the Jessee Mill with Mike Pulice who is the Architectural Historian, Roanoke Regional Preservation Office, Virginia Department of Historic Resources.

Mike Pulice believes the Mill is fully eligible for both State and National Historical Register status, and commented on its remarkable integrity. He is advising Sherman on appropriate preservation measures, some of which are needed immediately. We shall now need to complete a full application, providing what Mr. Pulice advises and requires. He was impressed with the historical significance and condition of the Mill, and will help with detailing the particulars required.

Mike Pulice says that, normally, it takes a specialized consultant to be hired, and several thousand dollars to prepare a full application. Some of us feel that we can do this with JHF members and resources, but it may mean many hours of volunteer time and coordination. **Please let Joe know how you can help. Write to Joe at joejessee@yahoo.com.**

SHERMAN WALLACE, wrote, 2/19/2003, with a special request for donations to help him preserve Jessee's Mill until some other arrangement is made. You may find his complete letter in the prior two newsletters. There has been as yet little direct response to Sherman, although I and a few others have made donations to help Sherman take some action on the Mill now to forestall further deterioration. He is proceeding with evaluation and some work, but it will take a good deal of money to do what is needed, even for just preserving the status quo.

I have requested that the Jessee Historical Foundation and other members of the family donate to Sherman Wallace for this specific purpose. Sherman owns Jessee's Mill, Dam, and land around it,

and is a Jessee descendant, as well. I have met Sherman a few times, toured the Mill and Jessee lands (including the cemetery when he leased it) with him, and know of his interest in preserving the Mill. My wife and I were guests in his mother's home, and enjoyed his generosity and hospitality. I find him to be an honorable man and trust him completely.

I have recommended that the JHF establish a specific fund to which members and others might donate money for preserving the mill, and that the JHF manage this fund, making disbursements from it as able and appropriate. Disbursement may be made to Sherman Wallace for these needed preservation actions and for directly related activities, such as the following.

I have asked that the JHF also take the lead or support others in establishing a separate non-profit corporation for the acquisition, preservation, and restoration of Jessee's Mill, if not to establish a Mill Creek Historic Park that would include Jessee's Mill, Dam, School, and historic Jessee home.

This separate corporation is needed if we are ever to ask the property owners and others to donate to this cause. This corporation could seek grants, donations, and other opportunities to accomplish these objectives, which the JHF cannot do. The JHF is already working with Sherman Wallace on seeking historical designation for the Mill, which is one of the first steps in this whole process.

I very much believe we need much wider leadership, and participation from other Russell Co. government, groups, organizations, and individuals to establish this non-profit corporation. Jessee's Mill is a Russell County historical icon. The legend and legacy of the Mill Creek Community with the mill, dam, Jessee home, school, store, Mill Creek Baptist Church, and the memories of all those wonderful people who lived there, are treasures to preserve for our children and grandchildren. **I ask for help and advice on getting this message out to a wider audience.**

PLEASE NOTE: Those who do not wish to wait for all the falderal above are encouraged to make a donation directly to Sherman Wallace now. I know Sherman will put your money directly into repairs and preservation of Jessee's Mill. God bless him.

TOM RUDDER provided this Web reference to a **topographic map locating Jessee's Mill.** It can be found at [TopoZone.com](http://www.topozone.com/map.asp?z=17&n=4085539&e=395992&s=25&size=m) which is a fantastic topographic map resource with many Jessee landmarks identified, including the cemetery. **Have fun playing on this site.** [Http://www.topozone.com/map.asp?z=17&n=4085539&e=395992&s=25&size=m](http://www.topozone.com/map.asp?z=17&n=4085539&e=395992&s=25&size=m)

Jessee's Mill Dam an Historic and Architectural Treasure

JOHN R FUNK [renkiewicz1@earthlink.net] has written previously with extensive information regarding the dam just upstream from Jessee's Mill and suggested **the dam may have been established while John Jessee was still living, before 1815**. This information can be found in prior newsletters and on the Jessee Website. John asserts that this may be one of the oldest and most unique structures of its kind in the United States.

TOM RUDDER (tomr@infostations.com) provides evidence, 6/20/2003, that **the original dam and mill may have been established even earlier**.

I think that everyone discussing the mill site should keep in mind that it was there prior to 1791. It is mentioned in the William Gilmore survey dated 13 June 1791. The mill was on Carr's Creek at the corner where the 200 acre and 50 acre survey lines meet. It appears that the mill was built by Aaron Vanhook who had made improvements on the land before he assigned his right to Gilmore who received a land grant on 17th. of Dec. 1792.

TOM RUDDER (tomr@infostations.com) responded, 1/15/2004, to the Winter 2004 Newsletter with clarification about **Aaron Van Hook**.

Jim: On page 13 on your Newsletter the reference to Aaron Van Hook is a little misleading when you say he lived in N.C. at about the same time period as the construction of Jessee's Mill. The Aaron in N.C. died in 1760 according to Van Hook Website. The Aaron Van Hook who built the mill on Carrs Creek was living in the area as early as 1781 when he had the 200a survey on Carrs Creek. In May 1781, Wash. Co. Court he certified Rev. Timothy Burgess as Baptist Minister. He was overseer of the road in Wash. Co. sometime between 1777 and 1784. So there can be no doubt of his being there at the time the mill was built.

TOM RUDDER (tomr@infostations.com) wrote, 1/16/2004, to a question about the reference to **Carr's Creek** in the above article and if it is the same as **Beck's Branch** and **Mill Creek**, today.

I do not know how Carrs Creek got its name but I suspect it was named for William Carr, one of the first Long Hunters in the area who settled on the Clinch River in what is now Tazewell Co. What I do know is that the first land surveys and grants identified the stream as Carrs Creek. In 1781 Aaron Van Hook had a survey there for 200 which he assigned to William Gilmore. Gilmore was granted the land and then sold it to John Jessee. William Dollarhide was granted 38 acres at the mouth of Carrs Creek. When the name was changed to Mill Creek I do not know but speculation has it that the name came into use because of the number of mills located there. How, when and where "Becks Branch" came into use I do not know. Betty Yates says that in the 1830's it was referred to as McLaughlin's Mill Creek. So that could be when the name Mill Creek originated.

SOUTHWEST VIRGINIA FAMILIES

Here I will feature articles, documents, and other information about other Southwest Virginia families who have intermarried with the Jesse(e) Family over many generations. Your contributions are welcome.

CURTIS GOMES [CurtisGomes@aol.com] wrote, 5/16/2004 with an inquiry about **William Bickley**, whom I believe to be the brother of **Charles William Bickley (1753-1839) of Bickley Mills at Castlewood, VA**. Please go to my database at www.jessee.org, and search the database for William Bickley b. 1757, died 1840, Mason Co., KY (RIN 1103). You will see that William Jr. was one among several children, and among the youngest, so it is unlikely that he inherited his father's estate. This William Bickley is my 4th great granduncle (Ed.). I am descended from his brother, Charles William Bickley. What makes this inquiry so interesting is that it pertains to research on **Peter Dent a Free Person of Colour**.

My name is Curtis Gomes and am presently living in New York City. I have been recently doing research on the Bickley/Beckley line from Mason County, Kentucky. I have no known relationship to this family but am intertwined by a series of events.

I am presently doing research on Peter Dent a Free Person of Colour. It seems that in 1843 there was a case where a Peter Dent helped a group of slaves escape which included his wife and 3 children, her sister and sister's husband, and another man. Their route of escape was through Ohio, Canada. They eventually ended up in Upstate New York. There was quite a reward for the return of these slaves and apparently the Governors of Kentucky and Ohio go involved in trying to find Peter Dent. The story was included in a group of interviews that was taken at the end of the century of ex-slaves and people who were involved in the Underground Railroad. One of those who was interviewed was a man who said that these slaves were owned by Shultz and Bradley but when I found further documentation, it stated that they were owned by William Beckley from Mason County.

When I tried the search engine in Ancestry.Com for William Beckley I found only one living in Mason County. However, when I went to the actual census, I saw the name William Bickley. I thought that this must be a misspelling of the name. I eventually found the same person with variations on the spelling in the 1810-40 Census.

After reading the info in the message board, it says that William died in Sept of 1840 but I saw that he did have a son named William as well. I can find no further info on that son.

I would like to know if it was him who inherited the estate.

What is interesting is that when I looked at the Land Grants in Kentucky it seems that the name is spelled Beckley. It seem that he was granted land in twice 1792 and once again in 1806. All three times that name is spelled Beckley.

Now there is a slight possibility that there were two people with that name; but after doing a lot of comparing of different information at the moment they really seems to be the same person.

If William Bickley died in 1840 does anyone that you know of have a copy of the will? I would like to see the inventory and see if I recognize any names of the slaves that he owned. This would clarify my confusion on the subject. Any help that you could give on this matter would be appreciated. Thank you for your time.

JESSE(E) FAMILY ORIGINS

There are many “Jessee,” “Jesse,” even “Jessie” families in the United States and Canada that we know are descended from families whose American origins are in Virginia. There are many Jesse, Jessee, Jessie, Jessey and, perhaps, Jeshy, Jaci, Jacy, and Jacie families in the world whose kinship is unknown. I believe we are all cousins. As “Jesse” and “Jessee” are the two most frequent spellings of this family name, I shall adopt the convention of using “Jesse(e)” in reference to the larger family.

Please see Newsletter #10 for an extensive discussion and summary of what we know so far about the origins of the Jesse(e) families in America. The many clues there lead us to several new avenues of research on the origins of the Jesse(e) families in, at least, Amelia Co., Cumberland Co., Essex Co., Isle of Wight Co., King and Queen Co., King William Co., Lancaster Co., Nansemond, Co., Middlesex Co., and Spotsylvania Co., VA, not to mention the Isle of White and Devonshire, England.

ROBERTA "BERT" J. DOOLEY [rjdooley23@aol.com] wrote, 4/28/2004, with this obituary for **Roach Jessie**, who is probably a descendant of **Lazarus Jesse**, whose Jesse and Jessie descendants settled in Adair Co., KY. I responded to ask how Roach Jessie may be related to **John William Jessie** and his wife **Magdalene Roach**. I suggest you look up these names in the Jesse Family Database at www.jessee.org, to follow the discussion.

COLUMBIA - Roach Jessie, 90, husband of Mary Wilson Jessie died instantly from an automobile accident. Funeral will be at 1 pm Thursday April 29, 2004 at Grissom Funeral Home in Columbia, Adair Co., KY with visitation today (Wednesday) starting at 4 pm.

I got an email from Carlis Wilson last night about his death and Carlis has been helped to ask with the services. Roach was like a dad to Carlis. Please keep family and friends in your prayers.

Roach was born July 13, 1913 Adair Co., KY and was the father of 4 children: Betsey, Tom, Elsie and Glen and the son of Rev Tom Jessie and Betsey Estes Jessie. He had 2 brothers that preceded him in death, Granvil T. and Edgar Jessie. He was the grandson of Granville Estes and Alice Keeton and great grandson of Warfield Estes and Mary Ann McKinney Estes. Warfield and Mary Ann McKinney Estes are my great great grandparents from Breeding, Adair Co., KY.

I don't know who Rev. Tom Jessie's parents were and the last time that I talked to Roach he didn't seem to remember. I have John William Jessie and Magadelene in my data but don't have Rev. Tom Jessie's parents... and I will bet there is a connection there too.. if you find out please let me know and I will do the same to you.. thanks for the reply. I am the great great great granddaughter of Rane and Jane Jessie/Jessee McKinney of Adair Co.,KY. Most of my line went to Adair Co., KY and settled and are buried there.

Roberta “Bert”



Here is the tombstone of Charles Bickley.
In the background is the restored home of Dr. Samuel Gibson.
This is the original Bickley home for Jim's gg- grandparents,
James Monroe and Evaline Bartee Bickley.,
Taken by Jim Jessee, 6/20/2004.

KAY DOTO [kaydoto@cox.net, wrote, 5/31/2004, with information regarding **Grace Pruner Alseron Meade, and her ancestors in the Meade, Gibson, Alderson, and Pruner families.**

My husband's maternal grandmother was Grace Pruner Alderson Meade. She was married to Frank Harrison Martin of Radford, VA. She had 2 children, Dorothy Meade Martin and Frank H.Martin, Jr. Dorothy Martin married Harold Joseph Doto. They have 3 sons.

Her sister, Maime died at age 13 or 15. Virginia Meade wrote a family history for her children and grandchildren. I do have a copy. Grace died in the early 1970's. Virginia some years later. I do have a Gibson family crest that looks like it was done by a family member. I can fax a copy of that if you are interested. India Elvira died when girls were young. Robert Samuel Meade remarried. I also have a picture of the Gibson farm and homeplace. Let me know if you are interested.

See Correspondence at the end of the Newsletter for more information regarding the **Kiser, Bolling, and Bartley families.**

OTHER JESSE(E) FAMILIES

DON MARSTON, JR. [Dbmarstonjr@aol.com] wrote, 3/20/2004, with this inquiry about a record in our Jessee Database for **Adolf JESSE**. Don asks if his **JESSA** family could be related.

Name: Adolf JESSE

Sex: M

Birth: in , , , Germany

Death: in , , , United States

Father: John JESSE b: Bef 1843 in , , , Germany

Mother: Matilda BAKER b: in , , , Germany

Dear Mr. Jessee:

I am trying to do research on my family tree and am having a hard time with my mother's father and his father's family. My grandfather's name was **Joseph Jessa** born abt 1911 and he had an older brother John Jessa born in 1905. They may have had a younger sister, Mary, born abt 1913. My grandmother Nellie Jessa who married Joseph Jessa would always say change the e to a ie Jesse to Jessa.

Joseph Jessa's father came from Germany on a boat and his name was probably

Adolph Jessa (or Ahoaf which I think is because of the accent what it might have sounded like this).

I don't have much information on Adolph. I am not sure where Adolph and his wife Emma Jessa got married and had their children. Most of the children lived in the Sparrows Point area of Dundalk in Maryland. There is not a whole lot of info to go on. In 1920, Emma Jessa was living by herself. I am not sure if Adolph was killed in the war, died or divorced his wife. I haven't found any evidence yet of where my grandfather Joseph Jessa was in 1920 unless he was moving or lived with other relatives (8 or 9 years old at the time).

If you have any information about Adolph Jessa or John or Joseph Jessa, I would appreciate it if you could help me out. Your Jesse website is great. It would be nice to find out that I am somehow related to your Jesse family.

Thank you very much.

Don Marston, Jr.

West Friendship, Maryland

PHILLIP AND RACHEL JESSEE

Phillip Jessee (1742-1858), wife **Rachel**, and his son **Gabriel Jessee (1804-1886)**, of still unknown relationship to John Jessee (1750-1816), are among the historic Russell County, VA pioneering families. Phillip, who is reported to have lived to be 116, is sometimes referred to reverently as "Old Phillip." Here I will feature articles, documents, and other information about Phillip and Rachel Jessee, their son Gabriel, and their descendants. Your contributions are welcome.

Gabriel Jessee descendants Irene Jessee Perry, Janice Jessee Tiller, and J.C. and wife Nellie Jessee have been generous supporters and stalwart workers who have helped establish the Jessee Family Foundation. For their past and continuing work, we thank them. I invite them and other family members to submit photos and other articles of interest for us all to enjoy.

Of note, Jimmy Herndon, owner of the John and Frankey Lea Jessee cemetery and original farm, is a Phillip and Rachel Jessee descendant.

SALLY LEEBORG (sl2309@netzero.net) wrote, 7/6/2004, with this exciting news for the **Phillip and Rachel Jessee Family**. Below is an inquiry from Sally Leeborg, regarding her "Jessie and Jesse" family. I very much believe the marriage she identifies below of John Henry Jessie and Willie Beckner is recorded in Jessee Family database as John H. Jessee who married Willie Beckner. Go to www.jessee.org and look up John H. Jessee who married Willie Beckner. John H. Jessee's father is Richard D. Jessee who married Mary F. Ferguson. Follow the Jessee pedigree back to our "Old Phillip Jessee," father of Gabriel Jessee. Note that these are descendants of a brother of Gabriel Jessee, John Jessee, natchurly.

This is the information I have. Harry Lee Jessie was born June 8, 1896, in Dillons Mill, Franklin County. His father was John Henry and his mother was Willie Beckner. I believe John Henry was the son of Richard Jessie and Mary Ferguson. I believe Richard served in the Confederate Infantry, probably the 57th Virginia? Harry also had an aunt, Lucy Wells, of Salem.

Any info you come across would be appreciated, or any direction you can point me to—I am taking into consideration the various spellings; by the time Harry was an adult, he was using Jesse.

MIDGE (marmig@swnm.com) wrote, 7/5/2004, with information about **Henry McKinney** who married **Edna Earl Plants**. Henry is descended from **Phillip Jessee's daughter, Mary Sue Jessee**, a sister of Gabriel, who married a McKinney.

Per the census below, if age given was correct, it would make his [Henry McKinney] birth year about 1894. He also states his Mother was born in KY.

His wife was Edna Earl PLANTS, born 1-18-1908 and she died: 10-15-1995, Harrodsburg, Mercer, Kentucky.

Edna, was the daughter of George Thomas PLANTS and Amanda J. Powell. Edna's, Plants heritage, goes back to Jacob and Nancy Cooper Plants of Mason Co, WV, with Jacob, being born in E Finley Twsp., of Washington Co., PA, as were all but one of thier children and he was the son of Christian and Catherine Haines Plants.

I am in the process of trying to verify (7-2004) this Plants branch, for a network of Plants cousins that are hard working on one united Plants tree.

1930 Logan Co., Chapmanville D6, WV
Henry McKinney, age 36, WV, F; VA, M: KY
Edna, age 21, WV
Henry C., age 4 yrs 9 months, WV
Donald L, age 2 yrs 11 months, WV

Another note: Henry and Edna had 8 children per a 1947 WV Plants family history book and also per the obit of the below daughter of theirs.

Berteen Garrett, 73, of Bakers Branch Road in Elkhorn, Ky., died on Tuesday, March 9, 2004, in Elkhorn. Daughter of the late Henry McKinney and Edna Plants McKinney, she was born on May 29, 1930, in Curry, W.Va. She was a member of The Church of Jesus Christ of Latter Day Saints and also attended Campbellsville Church of the Nazarene. Garrett is survived by two sons, three daughters and their spouses, Carl A. and Janet Brill of Colorado Springs, Colo., David Mills of Louisville, Ky., Sandra "Sue" and Gary Mauermann of Orleans, Ind., Teresa Morgan and Drenda and Darrell Skaggs, all of Campbellsville; two grandchildren, Derek Mauermann of Orleans, Ind., and Amanda Russell of Campbellsville; two brothers, two sisters and their spouses, Donald and Janet McKinney of Gallipolis, Ohio, Dennis and Debbie McKinney of Circleville, Ohio, Florence and Herb Schulte of Harrodsburg, Ky., and Pauline Wilson of Centerville, Ohio; a special friend, James Shelton Raikes; dear friends, Debbie MacConaugh, Patsy Moran and Pricilla DeSpain; dear friends of the family, Danny Clark and Dr. Eric Bentley; and several nieces and nephews. She was also preceded in death by one sister and two brothers, Audra McKinney, Clay McKinney and Raymond McKinney. Funeral was at 11 a.m., Friday, March 12 at Parrott & Ramsey Funeral Home in Campbellsville. President Dean Cooper of The Church of Jesus Christ of Latter Day Saints and Pastor Clifton Hale officiated. Burial was in Campbellsville Memorial Gardens. Pallbearers were Paul Green, Winfred King, Dennis McKinney, Don Alan McKinney, Eddie McKinney, Gary McKinney, Steve Schulte and Timmy Schulte.



Richard Jessee, center, with Joseph Harold "Doodle" Jessee and wife Ernestine Honaker Jessee at their home

JOHN AND FRANKEY JESSEE

Many, if not most, Jessees in America are descended from John (1750-1815) and Frankey Lea Jessee (1752-1836) of Cobb's Creek, Caswell County, North Carolina and Carr's Creek (today Mill Creek) in Reed's Valley, Russell County, Virginia. They had fifteen children. There are many "Jessee," "Jesse," even "Jessie" families in the United States and Canada who are known descendants of those fifteen children. All of us living descendants are about fifth or sixth cousins, or even closer kin.

Here I will report new information for John and Frankey and highlight news and significant contributions regarding each of their fifteen (I-XV) children. I will rely upon special requests and search of the Jessee Family Database to provide the detailed genealogy information to those interested in any particular branch, rather than provide all the new information I receive in the newsletter. There has been much new information added to the database regarding the descendants of John and Frankey Lea Jessee, so please visit www.jessee.org and look up your line.

I enjoy corresponding with many descendants of John and Frankey's fifteen children and have gleaned much new descendant and pedigree information. I cannot provide all of it in the Jessee Newsletter. Please visit the family database at www.jessee.org to see many new additions each month.

I. John Jessee, Jr.

John Jessee, Jr. (1775-1834) married Mary "Polly" Armstrong (1780-1840) and they had six children. This is the editor's line.

It was my pleasure to introduce my Chico, CA branch of the John Jessee, Jr. family to our fellow John Jr. cousins in Russell County. Here are a few of the highlights.



Cousins Taulbee Fuller "Toby" Jessee, with Jim Jessee



This is the Ephraim Jessee Home, and believed to be the home of his parents, Joseph Jessee, son of John Jessee, Jr., who married Cynthia Smyth/Smith.

DEE ANN BURRIS [dab@brightok.net] sent, 2/22/2004, the five generation photo on this page.

I thought you would like this picture. it is my dad **Quinton Dunn**, myself **Dee Ann**, my son **Roy Jones**, Roy's daughter **Sherri Correia**, and Sherri's daughter **Charity Correia**. Quinton's parents were **David Lee and Leona Dunn** and David's parents were **David G. and Malissa Jessee Dunn**. [Malissa is the daughter of James Mathias Jessee, son of Jefferson Jessee, son of John Jr.]



Quinton Dunn, myself Dee Ann, my son Roy Jones, Roy's daughter Sherri Correia, and Sherri's daughter Charity Correia.



More John Jessee, Jr. cousins enjoying each other at the reunion.

II. Archer Jessee

Archer Jessee (1776-1862) married three times: **Nancy Browning** (1781-1826); **Rachel Herndon** (1790-1833); and **Mary Jane "Polly" Owens** (1803-1884) and had fifteen children.

DALE ROBERTS [daler1@comcast.net] sent, 4/1/2004, this rendering of **Martha Jane (Margaret) Jessee Dickenson Fraley** and her second husband **Jefferson Davis Fraley**. Martha is the daughter of **Robert Stinson Jessee**, son of **Rev. Dave Jessee**, son of **Archer Jessee** and **Nancy Browning**.

I sent you some information awhile back about my great grandmother, Martha (Margaret) Jessee Dickenson Fraley. I recently found a picture of her and Jefferson Davis Fraley that hung in the bedroom of my grandmother's house where I slept as a child. I thought you might like to have a copy for your Jessee archives.



Martha Jane Jessee Dickenson Fraley and her second husband Jefferson Davis Fraley

DENISE HOLLIS [dhollis75@comcast.net] wrote, 7/7/2004, with the following request for help and information about **Cordelia Vesta Hollis Jessee** who married **Frances Calvin "Frank" Jessee**, son of

Thomas Jefferson, grandson of Vincent, and great grandson of Archer Jessee and Nancy Browning.

Hollis Family Research

My husband and I have been researching the Hollis family roots for about 15 years now. "We" are Curtis and Denise Hollis, from Sacramento, California.

Our research started those many years ago when Curt's grandmother, Viola [Votaw] Hollis started writing accounts of her childhood in El Dorado County, California. One of our family members had started typing up her handwritten stories and when Grandma Vi (by the way, she turned 95 in Jan 2004 and is sharp as a tack!) decided to add more stories to her personal biography, Curtis and I took over the secretarial duties. Ok, truth be told, I took it over and he was the cheerleader.

Curtis' roots go back to Alfred Hollis and Mary "Polly" Durham of Tennessee. Alfred was born about 1810 and Mary about 1814. We don't know who Alfred's parents are or where they may have been from. What we do know and have documentation of, is that Alfred and Mary married 28 Sep 1834 in Bond County, Illinois. I have a certified copy of their marriage document.

Alfred had a land patent in Bond County issued in 1840. Then about 1841, Alfred and Mary relocated to Barry County, Missouri. Alfred had a land patent in Barry County issued in 1856. The land patents are the only documentation we have to place Alfred and Mary in Illinois and Missouri. I have not been able to find them on the 1840 or 1850 censuses. By the 1870 census, Alfred and Mary were living in Arkansas and I believe died sometime after 24 Jun 1880 (the last census I found them on) in Arkansas.

Alfred and Mary had 12 children, James, Joseph, Jacob, John, Martha, Josiah, Nancy, William, Thomas, Susannah, Henry and George. Alfred's son, John Wesley is the next direct descendant.

John Wesley married Margaret J. Burkett on 2 Jan 1861 in Barry County. John and Margaret had 10 children, Nancy, Levenia, John, Mary, Arizona (aka Belle), William, Tilden (aka Sam), Cordelia (aka Vesta or Delia), Charley and James. Tilden is the next direct descendant.

Right now we are researching Cordelia Hollis who married Francis Calvin Jessee. I have not been able to document their marriage date of 24 Dec 1899. I also cannot locate them on a 1900 census. It was about 1883 when John and Margaret died. This is a "fuzzy" date, as I cannot prove the time frame. I have been able to trace most of the John Hollis children, but not all of them.

We are interested in filling in the Hollis-Jessee family connection and trying to see if there are any relatives of Cordelia who may hold the key to finding Alfred's parents. We will be happy to share any Hollis information we have, documented or not. There is a Hollis family page located at:

<http://familytreemaker.genealogy.com/users/h/o/l/Denise—Hollis/>
This is a work in progress but it does have some pictures of the Hollis'. You can contact us at dhollis75@comcast.net

III William Jessee

William Jessee (1779-1841) married **Mary "Polly" Vermillion** (1785-1879), and they had fourteen children. This family moved to Lee Co., VA.

IV. Lea Jessee

Lea Jessee (1781-1852) married **Barbara Gose** (1788-1862), da. of **Stephen Gose and Barbara Catron (Ketron) Gose**, and they had ten children. This family moved to Missouri, and includes among descendants Archer Catron Jessee, the first Jessee to migrate to California before the gold rush.

V. David Jessee

Reverend David Jessee (1783-1856) married **Catherine "Katie" Banner** (1788-1860) and had thirteen children. See also the discussion under Rebecca Jessee Burk below.

VI. Elizabeth Jessee Gose

Elizabeth Jessee Gose (1785-1827) married **George Gose** (1786-1861), son of **Stephen Gose and Barbara Catron (Ketron) Gose**, and they had twelve children. See the Gose Family discussion under Lea Jessee above, as well as additional information under Rebecca Jessee Burk below.

VII. Mary "Polly" Jessee Kiser

Mary "Polly" Jessee (1787-1836) married **Abednego Kiser** (1784-1814), who died in the War of 1812. They had four children and are the ancestors of many a Kiser from Russell Co. She later married James Chafin, whose abuse may have caused her death.

VIVIAN BALES (Marion, IN), Mary "Polly" Jessee Kiser's gggg-granddaughter, is a faithful contributor to this newsletter. She constantly works at ferreting out little bits and pieces of information she gathered over a lifetime, and sends them my way. I attempt to keep up with her by keying her information into the database. She often provides some good advice, memories, stories, and insights into her own colorful life. I am happy to report that Vivian, who is now 90 and in increasingly fragile health, still writes regularly, and sends along the flotsam and jetsam of her genealogy research. I do appreciate her faithful hard work.

Vivian has a particular interest in learning about and getting to know the **Jesse/Jessee families of New Ross and New Castle, near Crawfordsville, Indiana**. We welcome help from anyone with information or connections there. She wants us to bring them into the family fold.

Vivian wrote, January 20, 2004, with these very kind words and insight into her life.

Dear Jim Jessee:

Thank you for the newsletter. It is a big fat one, lots of Jessee news.

I thought you had forgotten me, that I did not get a fall 2003 news. But, also, old people like me are living on borrowed time too, and could leave that old address any time.

Late fall of 2003 I was spending a lot of time in the hospital, which has caused me to be pretty well a stay in now. But I am 90 years old.

The picture of the old mill at the Jessee home place...is it still standing? A miracle, if it is. I recall seeing a mill like that over 70 years ago at Alvin, Illinois. It was in use and grinding meal and flour almost every day. But it has been gone and forgotten to all, except the oldies like me.

Will slip in some little bit to pay the postage. I noticed the newsletter was much larger and also the postage higher.

I know there are some who absolutely cannot buy postage/many on a skimpy income, not enough for hand-to-mouth. But, couldn't some send in a little bit for postage. At least a dollar.

I was brought up to be frugal/saving whatever/don't rough shod anything. Don't throw out even a crumb. Watch those shoes, you only get two pair per year.

I too was born and partly grew up in those mountainous places. Times were hard. Welfare wasn't heard of.

When my parents moved to northern Wisconsin, I thought they had taken us to the end of the world. Talk about primitive living...and cold. Then, when Dad said this is enough, not another winter in this place/and we found ourselves in Brazil, Indiana, how warm and cozy.

We had lots of cousins living there. Like Old Home for awhile. Were many people from Ky. living there, that my parents knew. Eventually we wound up in Illinois in the Prairie Lands/good farming, but my Dad was not a farmer. But he made a good Railroad man. Steady job. But we were in a deep Depression. The whole country.

When we went from Ky. to Ohio, my goodness! I was sure we were in a foreign country, surrounded with people from foreign countries trying to find work too. One learns how to live and get along with others of a different country. God bless America.

In 1991, when I visited my daughter in Germany, I enjoyed it very much. They were like Americans and were exceedingly nice to us Americans. But France, Switzerland and Italy, I couldn't get out of those countries fast enough. God bless America and the Germans.

I was born and lived long enough among the foothills of the Appalachian Mountain people to always know how they live, think, and do. I am a part of them. Understand their ways. Good, kind people. It is good to walk upon the ground that our forefathers once walked, toiled, and made the land that we trod today. It is an honor to be their descendants.

Bless you, Jim, for all your work, and bringing us together to honor our wonderful ancestors. Honoring them brings up old memories.

Thank you so much.
Vivian

LARRY RAUCH [larau@mac.com] wrote,
1/30/2004, with this very exciting news for **Vivian Bales** and others who share **McKinney family heritage**.

To: James W. Jessee

From your website, RIN=34678

[provides the following information and notice.]

Name: James MCKINNEY

Sex: M

Death: Aft 1816 in , Russell Co., VA

Burial: Bef 10 SEP 1822

Source: Vivian Bales (801 E. 29th St., Marion, IN 46953) provided, 11/27/2000, descendants information for James McKinney, as well as 1850 Russell Co., VA Census data regarding the families of Noah Kiser, Charles McKinney, and the Ring family.

NOTICE: That an alleged Rane McKinney (see RIN 14969) had a son named Charles McKinney, ancestor of Vivian Bales, is sharply disputed by Vivian Bales, a descendant of James and his son Charles McKinney. She provided an abstract of the Will of James McKinney, Russell Co. Will Book A, pgs 97-98 which indicates that James had a wife Elizabeth, sons James, John, William, Daniel, and Charles, a daughter Levicey, and four daughters not named. Date of the Will, 5th August 1816, Probated 10 September 1822. Change Date: 17 JAN 2004 at 20:18:59

I have a copy of James McKinney's Will from FHL Microfilm 33825 & 33826; items 1,2,3,4 It can also be found on RootsWeb, (<http://www.rootsweb.com/~varussel/probate/jamesmckinney.html>) James also signed the petition to form Russell County)

James and Elizabeth* are my gggg grandparents the parents of Charles(abt1800-1880) who married Lavina Ring.

It is starting to look like James McKinney's father was Charles McKinney based on the following information just discovered by my wife last evening(1-29-04):

<http://boards.ancestry.com>

Subject: CHARLES MCKINNEY, b. abt 1700

Author: Mark Rosenblum

Date: 11 Dec 2003 6:43 PM GMT

Could someone PLEASE help me lookup some information on one of my wife's ancestors? His name is CHARLES MCKINNEY, and he was born about 1700 in ESSEX COUNTY, VA, and died 17 Mar 1798 in MERCER COUNTY, KY.

CHARLES was married twice - it is his first spouse that I am trying to track down. Most likely they were married in CUMBERLAND COUNTY, CHARLOTTE COUNTY, or LUDENBURG COUNTY, VA. I know nothing about her's birth, death, anything.

Then he married his second wife MARIANNE CHASTAIN, m. Nov 1761 in BUCKINGHAM/CUMBERLAND COUNTY, VA.

>From what I understand, the earliest record found to date on CHARLES MCKINNEY is his purchase of 200 acres of land in CUMBERLAND COUNTY, VA. On October 3, 1752 for a sum of 13 pounds from Michael and Ann Rowland as is recorded in county deed book two. The next record found is that of a land grant for 124 acres in CUMBERLAND COUNTY, VA on August 16, 1756 as is recorded in book 33, page 254 of the land grant office at RICHMOND, VA. He then sold the 124 acres on October 22, 1761 to William Samson for the sum of 12 pounds as is recorded in county deed book 3, page 239. CHARLES then purchased 75 acres of land in LUNENBURG COUNTY (that part which later became CHARLOTTE COUNTY), VA from Nathaniel Christian for 80 pounds as recorded in LUNENBURG COUNTY, VA deed book 7, page 349, entered under date of March 12, 1762. It appears that CHARLES moved his family to this location about this time. The next record found is CHARLES in a census and tax report taken in VA in 1782 which he is listed as a resident of CHARLOTTE COUNTY and being the head of a family of seven white persons and eight negro slaves.

I would appreciate any assistance in finding information on CHARLES MCKINNEY'S first wife! Please email me at mark.rosenblum@juno.com... Thank you.

Lunenburg Virginia

Re: CHARLES MCKINNEY, b. abt 1700

Author: JIM SMITH; Date: 9 Jan 2004 5:49 PM GMT

In Reply to: CHARLES MCKINNEY, b. abt 1700 by: Mark Rosenblum.

Charles Mckinney-Bet 1720/32 Prob.Essex Co Va. Death-Mar 17,1799 Mercer Co. Ky. Had A Will In Aug.22,1798 Mercer Co.Ky. Spouse-Marianne Chastain-May 17,1738 Goochland,Va Father-Rane Chastain And Judith Martain No Relation.Just Trying To Help.

Thank you Jim!

I cannot believe that there is no record of his first marriage, just the marriage to Marianne Chastain - it's one of those "brick walls" I guess...

It appears the RANE may be James McKinney's grandfather on his mother's side if Charles and Marianne McKinney are his parents! Marianne's father was Rane Chastain according to this finding. I will be searching for sources.

I think it is this way:

(1)Charles & Marianne Chastain(her father being Rane Chastain) parents of

- (2) James McKinney married to Elizabeth the parents of
(3) Charles McKinney married to Lavina (Ring).

I believe that James & Elizabeth may have had in addition to the sons mentioned in the Will a son named Rane Clinton named after James' possible grandfather. This son may have died at an early age. A lot of work to be done. Maybe James is not my brick wall any more!

Charles & Lavina McKinney's son, William who married Malinda Ann Cox (Cocke) is my line. William & Malinda are buried at South Muddy Cemetery in South Muddy Twp, Jasper, Illinois. I grew up in Clay County Illinois.

Hope you can help me and maybe I can help you! Please reply. We are all cousins!

Larry Rauch
St Augustine, FL 32080

VIII. Frances Jessee Stone

Frances Jessee (1789-1860) married **William Stone** (1789-1860), son of **Jeremiah Stone**. They had ten children. This family is believed to have moved to Missouri, and we know so little about these descendants that any tidbit is big news.

I met two new Frances Jessee Stone descendants at the Jessee family reunion, and have had several contacts with Stone descendants from Missouri. I hope we have more to report here in future newsletters.

REGINALD DAY [rday1169@swbell.net] sent, 4/16/2004, information regarding **Harvey G. Stone**, and **Stephen J. Stone**, two of the sons of **William and Frances Jessee Stone**.

I have some info on Harvey you might be interested in. Harvey is listed in at least 3 census enumerations with a birth year of abt 1838. I have also included ancestor info on Martha Caroline Dyer. My wife is descended from Nelson Dyer, father of Martha Caroline.
<http://awt.ancestry.com/cgi-bin/igm.cgi?op=GET&db=day76149&id=I1788>

I wonder if you could clear something up for me. It seems that William Stone has 2 Harvey G. Stones in his household in the 1850 census (see info I sent you) One born abt 1828 and one born about 1838/1839. It looks to me like it is the second Harvey that married to Martha Caroline Dyer and was a war veteran. Can you tell me if this Harvey G. is a grandson of Williams as I don't believe he would give two sons the same name.

Reginald Day provided a PDF document with the Harvey G. Stone descendants, and the extensive family of Martha Caroline Dyer. It contains considerable documentation, largely Census records from 1850 through 1930. It is my speculation that Harvey G. Stone, had an older brother, Stephen J. Stone, with a son named Harvey—could be the grandson inferred above. In a followup message Reginald noted this information regarding Stephen J. Stone.

[In the Jessee Family Database] I noticed The Harvey, Martha Ann and Frances you have listed as children of Stephen J. Stone but no documentation on these children. Something worth noting. Same district and county as William and both Harvey Stone's in 1850 census, 1850 census Dist. 96 Sullivan Co., MO p.314 123/123 image 20:

Stephen Stone m 30 VA
Lucy f 28 VA

Marthaan f 7 MO
Congrave C, m 3 MO
Hugh N. m 3/12 MO

IX. Sarah Jessee Vermillion

Sarah "Sallie" Jessee (1790-1851) married **Wilson Vermillion**, son of **Jessee Vermillion, Sr. and Mary "Polly" Scott**. They had three children.

X. Boedicia Jessee Gose

Boedicia "Dicey/Dicy" Jessee married **Stephen Gose Jr.** (1792-bef. 1842), son of **Stephen Gose and Barbara Catron (Ketron) Gose**. They had eight children. This family moved to Iowa.

See the Gose Family discussion under Lea Jessee, who married Barbara Gose, and Rebecca Jessee Gose above, as well as additional information under Rebecca Jessee Burk below.

XI. James Jessee

James Jessee (1794-aft 1846) married **Jane Burk** (1795-aft. 1846), d. of **Fleming Burk, Sr. and Rebecca Miller**. They had four children. See also discussion under Rebecca Jessee Burk below.

IRIS LAMBERT HALL, a descendant of James Jessee, is a regular contributor who shares a lifetime of research, and more than a bit of wisdom. She is in increasingly difficult health, but keeps in touch.

HELEN ULSKY TOMLINSON wrote, 5/2/2004 [htomlinson@tenforward.com], with information about the descendants of **James Robert "Bob" Tomlinson** who married **Nancy Jessee**, daughter of **Christopher Jessee, son of Fleming Burk Jessee, son of James Jessee and Jane Burk**.

Bob's real name was James Robert & the children were Omer, Mary, Mae, Ruby, James Roy, Garner (Steve), Ruth. Ruth is the only child living & she lives in Alcoa Tn. Omer married Minnie Denton & their children are Glussie who married Charles Pope, Billy who married Helen Ulsky, that's me. Mary married --England, I will think of it later, had 4 children I believe, need to check my records for that but only Helen Joyce is still living & lives in St. Charles, Glussie lives in Pennington Gap, Mae married Dan Shackleford & had a daughter Nancy married an Ely & had 4 children. Debbie & Danny I believe live in Pennington Gap yet, the other two girls probably do as well, Nancy lives in Pennington as far as I know. Ruby died in 1918 of the flu, Roy married Eva & had Jim, Carolyn, Pat, Gail, I think another daughter, don't know where they live but think elsewhere, Glussie probably knows. Steve married 3 times but left no children.

I have some census information on the Tomlinson's from Ancestry.com they lived in Scott county, Bob's mother was Lydia & his dad was James. I have to go back to my records to find out all the info for sure. Am doing so much here with all the families.

Enjoyed reading so much on your site. Have been wanting information on Denton Valley where the Denton side of our family came from. Of course, since I am from the Washington state area I

know very little about VA except when we visited & Bill isn't the greatest source. Glussie has helped a lot but she only has a limited memory on that part of the family. Most I gleaned from when Minnie lived with us.

Remember visiting Nancy Tomlinson when we were first married, she & I sat on the front porch there in Pennington & she would talk & I would listen. She told me that as a young girl she wanted to chew snuff so badly like all the other girls but she just couldn't. So she smoked a corncob pipe. I was fascinated by her. Was a very tall lady with large feet for the time. Most ladies had small feet so it was surprising. She was diabetic & on occasion would slip up & eat a biscuit. She would laugh & say she just forgot she wasn't supposed to have that. Our oldest son was named after both of his grandfathers as they were both deceased. She told me she could never call him Omer as that was her son's name & there would never be another like him. I thought that was sad as Bill was so proud of his father & felt it was honoring him by naming his first born after him. But then mothers are special with their children. I forgot Ruth married Bob Boffetti & they have a daughter Angeline. Bob died a couple years ago. Angeline married someone in Pennington & is divorced but had a son by him & has 2 grandchildren. Again, Glussie would know the name.

I will let know Glussie know about the reunion, I hope she will make it, she likes to go to things like that. She is 85 but she is very active. Has been great visiting with you & great seeing the info about the Jessees & the history of SW Va. I'm always interested in the history.

XII. REBECCA JESSEE BURK

Rebecca Jessee (1796-1860) married **William Burk** (1797-1850), son of **Fleming Burk, Sr.** and **Rebecca Miller**. They had ten children.

KATHRYN BURKE GREEVER, JACK HOCKETT, IMOGENE BURKE VERBAL, and RUE BURKE STEVENSON published *Some Descendants of John Burk, 1656-1699, Middlesex Co., Virginia*, available from the Iberian Publishing Co. Order online at www.iberian.com. All royalties go to the Russell Co. Historical Society and Russell Co. Library Family History Room.

This 502-page book details the descendants of **Fleming Burk, Sr.** Four of his children married Jessees, two children and two grandchildren of John and Frankey Lea Jessee. Jane Burk married James Jessee; William Burk married Rebecca Jessee, Fleming Burk, Jr. married Nancy Ann Jessee, daughter of David Jessee; and Robert Burk married Anna Gose, daughter of Elizabeth Jessee and George Gose. This book includes over 1000 descendants of Rebecca Jessee and William Burk. I would like to work with any volunteers who would be willing to help key this information into an appropriate genealogy database.

XIII. Jane Jessee Fuller

Jane Jessee (1797-1869) married **Henry Fuller** (1792-1872), son of **Abraham Fuller** and **Mary Sargent**. They had ten children. This family moved to Illinois. While I have a scant amount of descendants' information, I do not correspond with any descendant

of Jane Jessee Fuller. This is a family that needs much research.

TOM RUDDER [tomr@infostations.com] sent the following information regarding **Henry and Jane (Jessee) Fuller**. **It is a breakthrough as it indicates where they went, Coles Co., IL, and it provides the names of all of their eleven children.**

Jim: Ran across this by accident. Now it should be possible to fill in the gaps. Tom

This is taken from the *Portrait & Biographical Album of Coles County Illinois 1887*. Biographical Section, by Rev. Silas White, page 372, Chapman Brothers, Chicago. It can be found in Ancestry Com. by going to "All Data, then Index 'C'" and scroll down to Coles County. It appears to be taken from an article submitted by their grandson, speaking in this quotation of his mother and grandparents, Henry and Jane (Jesse) Fuller.

Henry and Jane (Jesse) Fuller. Her (referring to the author's mother) parents (Henry and Jane Fuller), were born in Russell County, VA, her father April 1, 1792, and her mother, April 19, 1796. They were reared in their native county and married there Jan. 20, 1814. Eighteen years later (abt 1832) they emigrated to this State, and taking up their residence in North Okaw Township, continued here the remainder of their days.

Mr. and Mrs. Fuller were people who enjoyed the highest respects of the community and were among the warmest supporters of the Methodist Episcopal Church. Henry Fuller was Justice of the Peace for several years, and took a genuine interest in the various enterprises having for their object the welfare and progress of the people at large. The household circle included eleven children, namely, Samuel, Rebecca, Mary, Abraham, Catherine, Nancy, Archer, Wilson V., Leah, David H., and Emeline. With the exception of Mrs. Gilmer, all were born in Virginia. All lived to years of maturity, but only three are now living--Nancy, Leah, and Emeline.

It immediately leads to a new research question. Previously I had only five of their children recorded, and fortunately four of the five agree with the information above. However, I had recorded a son William N. Fuller with a number of descendants, who is not listed above. There is possible correspondence with Wilson V. Fuller, who may be the same individual. Now I need to understand if they are the same, or if William N. Fuller is misplaced in this family.

XIV. George Lea Jessee

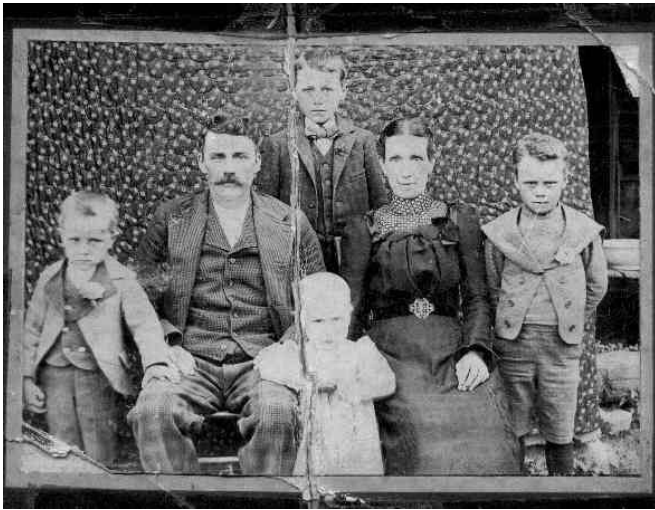
George Lea Jessee (1798-1882) married **Elizabeth "Betsy" Counts** (1799-1880), da. of **John Counts, Jr. "of Glade Hollow"** and **Margaret "Peggy" Kelly**. George and Betsy had fourteen children.

Many George Lea Jessee descendants are subscribers and have contributed very much information to the database. It is one of our best researched and recorded branches of the family.

XV. Martin Jessee

Martin Jessee (1801-1879) married first **Virginia Jane Price** (1801-1853), da. of **David and Jane Price**, and they had eleven children. He married second **Mary Jane Darnell** (1834-1907), and they had seven children. Martin, with a total of 18 children, may have the most Jessee descendants in America.

CRISTI JESSEE APPLETON and her mother **SUE JESSEE** [mailto:jessee@wcta.net] wrote, 3/13/2004, with additional information regarding the descendants of **Martin Van Buren Jessee** and provided a family photo of their son **David William Jessee** with **Raussie "Rosa" Beverley** and children: 1. Wilbur Calvin, 2. Martin, 3. George, and 4. Jack Jessee. Child 5. Lola and 6. Opal were born after this photo.



David William Jessee and Family



Wilbur Calvin Jessee

MISSING LINKS, PROBLEMS AND OTHER CONUNDRUMS

Please help us solve these riddles.

PATRICK VISSER [pvisser@rcn.com] wrote, 5/19/2004, and asked for help indentifying the following photos and images.



This was in my gg grandparents collection. We're not sure who it is. I believe someone wrote "Mag" on the photo and then my gg-grandma wrote M. Kiser next to it because I recognize her handwriting. Now, I have to figure out who was called Mag in our lineage of Kisers. It would either be daughter of Bell Clapper James S. Kiser or his sister (dau of Joseph kenton Kiser and Mary).



Back of photo is written "Tom kiser, Leiths G., George Bandell or Bardell? need help with ID.



Need help with identification.



This is an oil painting that was in the possession of my gg grandparents, Gard and Winnie Kiser Sutherland. There is no name on the back of the photo. Any help with ID is appreciated.

CORRESPONDENCE

The following are only a few of the many communications I am fortunate to receive. These, in particular, give color to our work, address problems, provide new information, corrections, or updates, and both answer and ask new “missing links” questions.

SWAMP FOX KNIVES [swampfoxknives@frontiernet.net], wrote, 6/29/2004, with information about Ode Hall Kiser and an address for a Kiser Research site, as well as advice regarding Jessee's Mill.

Here is the Kiser Site.

<http://freepages.genealogy.rootsweb.com/~jvoyles/>

You will see where info was updated for Generation 7 and 8. Also in Kiser Family Connections under Kiser, Beverly Floyd Descendants. You probably would want to start at the Bev Floyd info first.

I am updating with Fred right now. He does not have a site, but is a “keeper” of Bolling/Bartley info. He may not get back with me until this week-end for proofing. Are you interested in Bartley? The Bollings are still a mess. We know Henry is related to Wise, County, Va Bollings but there is no proof (despite what we see on the net) as to his specific line. A researcher is headed that way in August to see what she can dig up. I am going to try to do a little more research this week.

So glad you are willing enough to be interested. I do not have a site nor do I have software and it is great to have others that do not mind spidering off a bit into the cousins.

BTW- The Mill is beautiful and in great shape. I wonder if you could get some re-enactors associated with The Wilderness State Park to get involved...or suggest folks who might want to be.

Billy Heck (Park Director) and Jason Gatliff (a new employee and Editor of a small magazine called “On The Trail”) may have some ideas for you. Just a thought... It may go no where or it may work to the advantage of the Mill.

There was a reenactment at the Park the 2nd weekend in May 2004. It went well. I was there with my family. I w how Billy is connected with Martin’s Station (in the Park) but I know Jason is descended from Gatliff frontiersmen of the area. If you choose to go that way and use my name you will probably need to associate it with my husband, Tim Ridge. Billy and Jason are customers of my husband (a blacksmith). Jason is also a friend. Jason does some great portrayals of especially of period beggars...

JIM JESSEE submits the following, taken from home town newspaper *The Chico Record*, 1941, about his grandfather, **Norval Clarence "NC" Jessee**.

It's A Poor Dog's Life; Ask N.C Jessee, He Knows

If a certain dog in Chico could talk today, he could explain volubly just why the street lights were out on the main streets Monday night.

But N.C. Jessee can talk and will gladly inform doubting Thomases as to the reason for the darkness.

It seems that this certain dog was paying his customary nightly visits to telephone poles, trees, etc. along his regular route, when he came upon a particularly inviting light standard pole on Broadway between Third and Fourth Streets.

A scant second later said canine took off up Broadway, tail between his legs and yelping yelps that probably meant: "I've never been so shocked."

Jessee, observing the incident, pondered. "That pole couldn't be shorted," he said to himself, and carefully placed his hand upon it.

Jessee didn't take off down the street after the dog, but his pipe, passersby declare, went at least two feet in the air, and the prominent well driller was massaging a numb hand for more than an hour.

"That poor dog," he observed as he walked down the street.

RESOURCES ON THE INTERNET

The Internet is a revolutionary and remarkable resource for genealogists. From time to time I will provide here pertinent information regarding Web resources and other links of interest to the Jesse(e) family. I invite you to provide me with addresses for Web pages developed by family members and other resources of interest, too.

MICHAEL A. DYE has created **The Russell County Page** of the VAGenWeb division of the USGenWeb Project. This is an award-winning site, and a terrific resource for all families whose sojourn in America included time in Russell Co., VA. Michael has been instrumental in assembling a vital online depository of Russell Co. records, indexes and abstracts, genealogical data, historical maps, local history, and lore. We thank you. You can join the Russell Co. List Server. This is a must see-site for Jessee researchers at <http://www.rootsweb.com/~varussel/>.

MICHAEL DYE [madye@fuse.net] sent, 3/29/2004, to VARUSSEL-L@rootsweb.com the following information regarding **1870 RCV Marriage Records** now online!

I've just added the 1870 RCV Marriage Records to the Russell County VAGenWeb project. Here's the link:

<http://www.rootsweb.com/~varussel/vitals/marriages/1870.html>

That makes the records complete from 1853 through 1899. To see any year, go here:

<http://www.rootsweb.com/~varussel/vitals/marriages/index.html>

BILL SUTHERLAND [toybill@naxs.net] wrote 2/19/2004, about the **Sutherland Books Website**.

We have opened a new website, sutherlandbooks.com, for the marketing of our books. This notice is being sent to all John Counts of Glade Hollow Volume 2 contributors and purchasers who have known e-mail addresses. Among other things on the new website will be the current additions and corrections for John Count Volume 2. We expect to update these additions and corrections on this website in January of each year. Thank you all for your contributions and interest.

THE FAMILY DATABASE

The Jessee Family Genealogy Database is on the Web at the RootsWeb World Connect Project. RootsWeb is the foremost volunteer-based non-profit genealogy resource on the Internet. Please go to:

<http://worldconnect.genealogy.rootsweb.com>

This World Connect Website provides an index to multiple genealogy databases, provides excellent display and print options for pedigree and descendants charts, and allows people to download GEDCOM files. It is public and easy to use. Do a search for one of your favorite ancestors. Look for data records submitted by "jimjessee," and if you select one it will take you to our database. You can also navigate to the database directly from our Jessee Genealogy Service home page.

Please go to: www.jessee.org

Our database is now over 42,000 records. I do mean "our" database, as it is made up of the tens of thousands of hours of your research, the results of which you have generously and kindly shared with me over the years. I still have concerns about the downside of this computer revolution, the Internet, and the ethics of genealogy research, but still conclude that greater good is done by making our work public. However, I am using the filters provided by the World Connect project to delete information on living persons.

I know that by the standards of some, I have violated best if not ethical practice, by making so much unverified information so public. It is already clear that errors in this database, even when later corrected, show up all over the Internet in other people's work. Others, many unknown to me, have used this database as an authoritative source. Beware, it is not!

I very much regret it when I see known errors, which appeared in this database in earlier years and have since been corrected, show up in other's genealogy, and quoting me as the source! I shudder at the fact that I know there are many unknown errors in the database, along with ignorant speculations, fantasy and plain lies.

Nevertheless, I have had so much expressed gratitude from dozens, if not hundreds, of people who have been helped in their research by our database, that I persevere. I certainly do welcome corrections, updates, additions, and documentation of information, and you who are receiving this newsletter have been very generous in that regard. You might be surprised how many take and give back nothing.

Some feel the need to wag their finger at me, too, just to make sure I know how important it is to get this right. I do get down when I have been given a good scold, but perk up when the next inquiry is made. I think there is no greater gift than to help people learn where they come from. I cannot "not help" someone on this quest. Please forgive me for the rest.

OUR PURPOSE

I believe that we are, indeed, all cousins, and that we can be colleagues and friends, too, sharing information and helping each other know what it means to be part of an extended family and to appreciate our common heritage. To these aims I dedicate this newsletter.

I research my own JESSEE ancestors, including the ARMSTRONG, SMYTH/SMITH, PORTER, DUNCAN, BICKLEY, RICHMOND/RICHMAN, BARTEE and BARRICK families; and many other SOUTHWEST VIRGINIA FAMILIES who have intermarried with the Jessees, including the BANNER, BROWNING, BURK(E), COUNTS, FULLER, GOSE, KISER, STONE, and VERMILLION families. I have an abiding interest in family history.

I would like to discover all of the descendants of the fifteen children of JOHN AND FRANKEY LEA JESSEE, and assist other Jesse(e) family members with their research. This is admittedly a monumental chore. I am giving myself the rest of my life to accomplish it, and may he live so long! The fun is in the learning and the friendships I develop along the way. I am rewarded all the time by the e-mail, calls, visits, conversations, and correspondence I have with you.

The purpose of this newsletter is to facilitate the exchange of information and documents relative to the genealogy of the Jessee and related families whose roots may be found in Southwest Virginia. I wish to enter all data provided me into the JESSEE FAMILY DATABASE discussed above. In return for information shared, I will share charts or GEDCOM data files with you on request.

I am afraid I am now accumulating more information than I can key into the database on my own. After 25 years of working intensively at a keyboard, I have developed a permanent disability, a bulging disk, which makes any prolonged time typing very painful. My computer time has been significantly limited and, in particular, my regular data entry routine has all but stopped. While I continue to plink at it, I am not denting the perhaps 3000-4000 records piled high and waiting to be keyed in. I will need help with data entry into the database in the future if it is to grow.

I am asking you to respond to this newsletter with answers to questions, documentation, your own materials, and, of course, current information about your branch of the family, preferably in the form of a GEDCOM file you will allow me to integrate into the database. I will filter out living individuals in the version of the database that is made public. Please feel free to correct any errors found. I wish to have a correct and trustworthy database as a resource for the family.

While limited in my ability to type, I will continue the newsletter, although I would welcome help. I am finding new ways to capture materials and avoid typing. I welcome the submission of pedigree and descendants charts, letters, manuscripts, electronic or scanned images of source documents and photos in JPG or TIF formats (600 dpi TIF files are best), as well as any word-processor or text files.

HOW TO HELP

I am operating on subscriptions and donations and don't even break even on out-of-pocket costs. The labor is all volunteer. I provide the newsletter free to anyone who has asked for it, provided me information, or has expressed interest and cannot afford to subscribe. I am providing the newsletter free to several historical and genealogical organizations and libraries. You are welcome to provide addresses of others that may be interested in our effort. I am looking for those willing to exchange information or represent their branch of the family or area of the country.

I am sometimes disappointed to find that less than 25% of readers actually subscribe or donate anything. *I do need help, even if it is simply informing me to stop sending you the newsletter if it has become junk mail.* I am steadily reducing my mailing to include those who have subscribed, provided donations, helped in some other way, are sponsored by someone else, or are a family treasure. If you are getting this newsletter, you are at least a family treasure. If I drop you in error, just let me know. Please inform me of address changes as returned and re-posted mail costs me, too.

ANNUAL SUBSCRIPTION

I am asking for a minimum subscription of \$10 a year for two issues of the newsletter. I need and appreciate your additional donations in defraying the considerable cost of research, printing, and postage of the newsletter and other materials I send without charge to inquirers. Additional donations also support those who can't afford to pay.

NEWSLETTER REPRINTS

At the request of many, I have now collected Jessee Family Newsletters into separate sets of reprints: #1-7, #8-9, #10-11, #12-13, #14-15, #16-17, #18-19, #20-21 (without some attachments that have become obsolete). You may request these for \$10 a set, or **\$60 for all back issues and a subscription to the current year.** Your additional donations to help me defray the costs of research, printing, copying, and postage are very much welcome.

The Jessee Family Newsletter

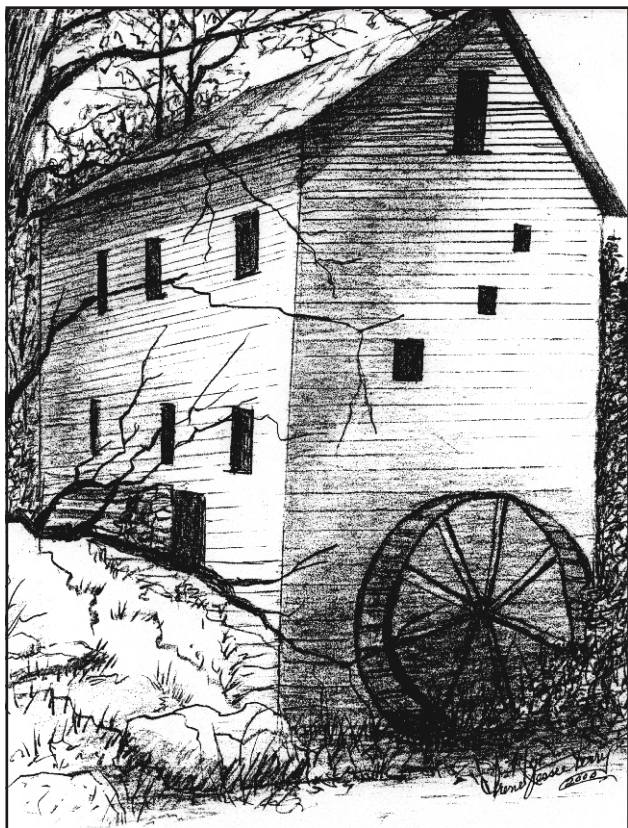
**Edited and Published by
James Wilson "Jim" Jessee
1272 Hobart Street
Chico, CA 95926-3702
Telephone: 530-342-2652
E-mail: Jim@Jessee.org**

**Website: www.jessee.org
Webmaster: Earl Wilson Jessee
E-mail: Earl@Jessee.org**

Copyright--All Rights Reserved.

The Jessee Family Newsletter
1272 Hobart Street
Chico, CA 95926-3702

James W. "Jim" Jessee, Editor
jim@jessee.org
www.jessee.org



A rendering of Jessee's Mill by Irene Jessee Perry.

The mailing label above indicates the expiration date of your subscription. It is based on your assumed interest, paid subscription, or previous generous donations. I am providing you the first issue of the new subscription year free as a reminder to renew. I am hoping that those receiving this Summer 2004 Edition with a 1 Jan 2005 expiration date or the notation "expired" will renew for the entire calendar year 2005, next year. Please inform me of any errors or corrections needed on your subscription expiration date.

I have continued to provide a copy to a few whose subscription has lapsed, because, from previous correspondence, I believe you may want it. Please subscribe or inform me if you wish to continue receiving for free or if you wish to stop.

The generous donations of some allow me to provide free copies to history and genealogy societies, libraries, and those who cannot afford to subscribe. Still I am not breaking even. A special thank you to those who have provided those precious additional donations that keep me going.